

Water Supply Assessment and Water Supply Verification for the Desert Retreat Project

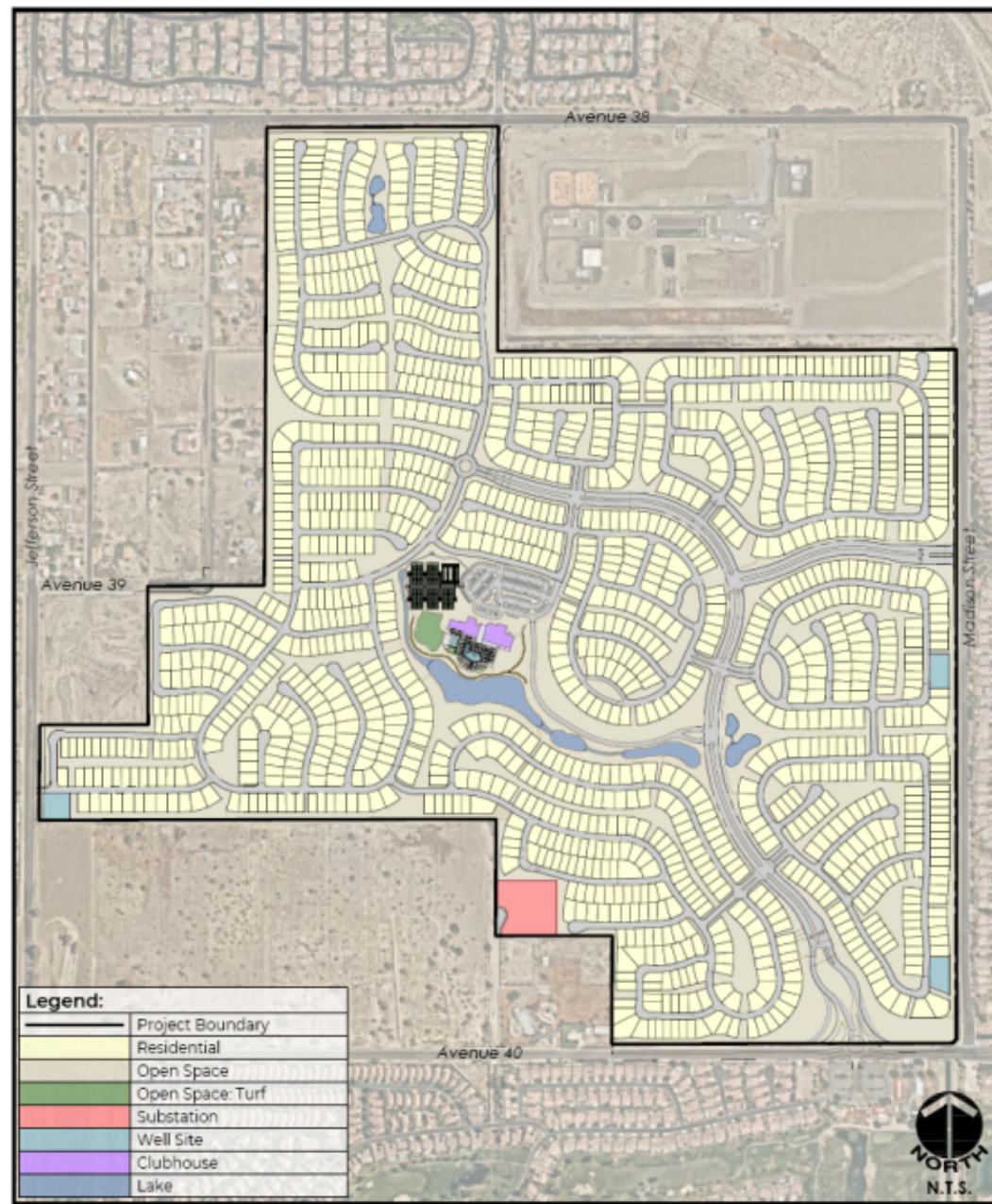
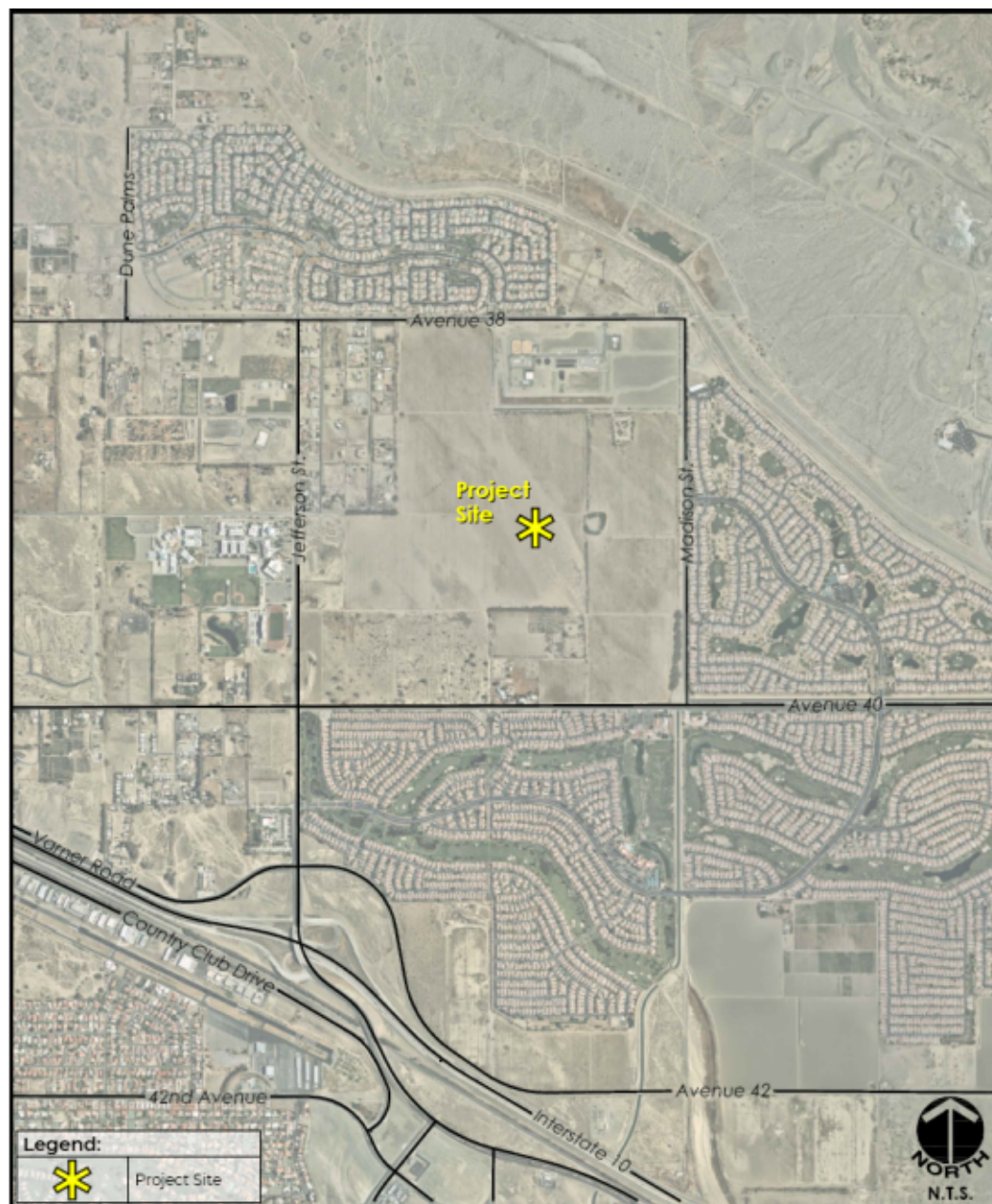
Board of Directors Meeting

February 14, 2023



Our Mission

To meet the water-related needs of the people through dedicated employees, providing high quality water at a reasonable cost.



Projected Total Water Demand

Planning Area	Land Area (Acres)	Indoor Residential Demand (AFY)	Indoor Commercial and Industrial Demand (AFY)	Outdoor Irrigation Demand (AFY)	Total Water Demand (AFY)
Residential	206.12	280.93	-	352.38	633.31
Clubhouse & Guardhouse	26.11	-	8.50	74.40	82.90
Non-Potable Irrigation Lake	5.44	-	-	41.33	41.33
Open Space	66.93	-	-	165.28	165.28
Open Space - Private streets	67.22	-	-	165.99	165.99
Open Space - Public Right of Way	1.99	-	-	2.65	2.65
IID Substation	2.32	-	-	3.08	3.08
CVWD Well Sites	1.54	-	-	2.05	2.05
Total	377.67	280.93	8.50	807.15	1,096.59

¹ The total projected water demand of 1,096.59 AFY is equivalent to 2.9 acre-feet per acre.

² It is anticipated that the non-residential outdoor demand of 454.78 AFY will be met with non-potable water.



Your water is our promise